

# Tiger Chart Instruction Manual

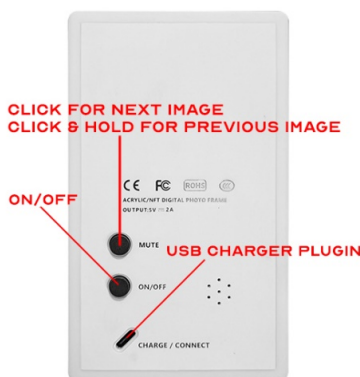
The **TigerChart** is simple to use. It's intention is not to measure precise Snellen acuity but to simulate how individuals use their near vision on a daily basis.

Our patients stress their near vision with the daily use of computers & cell phones. As a practitioner, you should simulate a more realistic and functional assessment of their vision during your eye exam. **TigerChart** allows you to do that.

There are **only 2 buttons**.

**TOP Button (MUTE)** – Click to advance to next image.

**TOP Button (MUTE)** – Click & **HOLD** to go back to the previous image.



**Battery:** Prepare for first use by plugging in the provided USB cord & charger to an outlet. Initial charge takes up to 3-4 hours. Standard charging time is 2 hours. **Powering off the device** between patients will extend your battery.

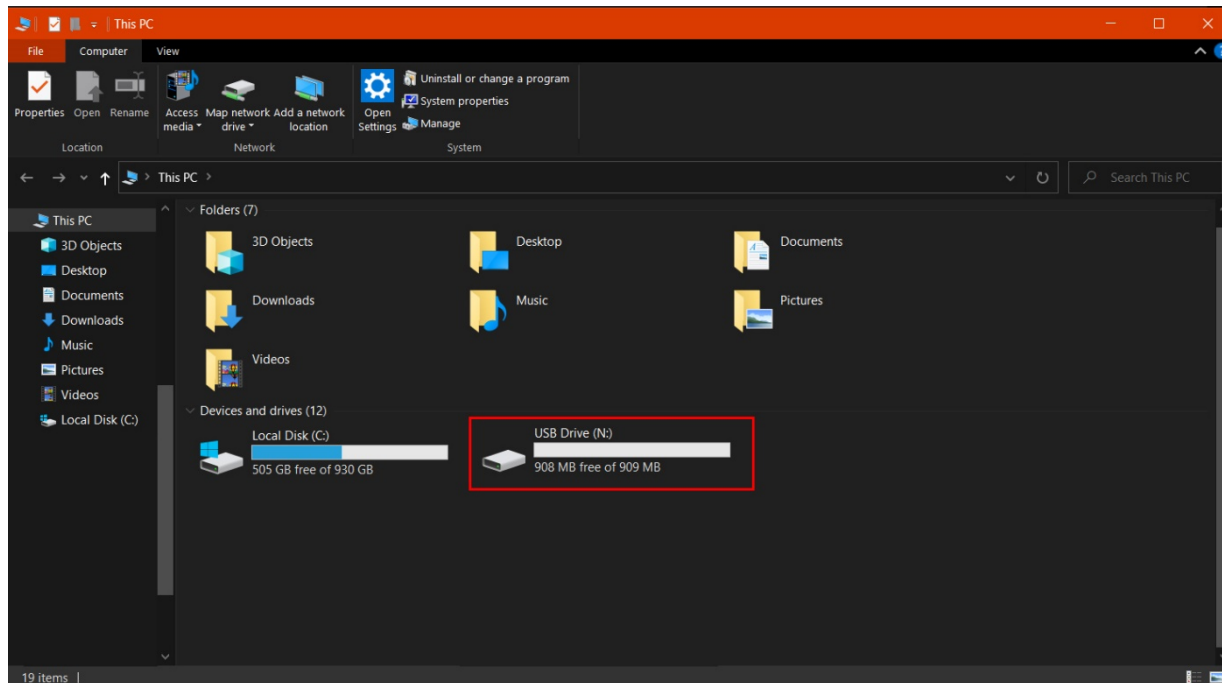
**TURNING DEVICE ON** – Click on the **ON/OFF** button and a screen with the first slide will appear.

**TURNING DEVICE OFF** – Click on the **ON/OFF** button and the TigerChart will shut down.

Please contact us at [info@tigerchart.com](mailto:info@tigerchart.com) with any questions.

# Tiger Chart Slide Rearrangement Instructions

1. Plug in the provided USB-C Cable to your PC & TigerChart.
2. A new “USB Drive” will show up in My Computer as circled in red in the image below:
3. If a new drive does not show up, try using a different USB-C Cable as some may not have data transfer capabilities.



4. Double Click on the Drive, there will be a folder inside called “Photos”, double click on that and inside will be your slides arranged from 01.jpg to 18.jpg.
5. You may re-arrange the order of the slides by renaming the file names to the order you would like them to be in. For example, you would like slide 18.jpg to be first instead of last. Rename 01.jpg to anything that isn't currently in use, to say, 0001.jpg, then rename 18.jpg to 01.jpg, and then rename 0001.jpg to whatever position you'd like it to be in.
6. When you are done, disconnect TigerChart from your pc and click through the slides to see if the order is correct.